

## Overall Summary

### Tests Summary

Test	Status	Type	Tolerance	Clash Groups				
				Active	Approved	Reviewed	Resolved	Total
<u>ARCH vs ELEC</u>	ok	hard	1.00in	0	0	0	0	0
<u>ARCH vs FIRE</u>	ok	hard	1.00in	0	0	0	0	0
<u>ARCH vs HVAC</u>	ok	hard	1.00in	0	0	0	0	0
<u>ARCH vs PLUM</u>	ok	hard	1.00in	3	0	0	0	3
<u>ARCH vs STRCT</u>	ok	hard	1.00in	0	0	0	0	0
<u>ELEC vs FIRE</u>	ok	hard	1.00in	0	0	0	0	0
<u>ELEC vs HVAC</u>	ok	hard	1.00in	0	0	0	0	0
<u>ELEC vs PLUM</u>	ok	hard	1.00in	0	0	0	0	0
<u>ELEC vs STRCT</u>	ok	hard	1.00in	0	0	0	0	0
<u>FIRE vs HVAC</u>	ok	hard	1.00in	0	0	0	0	0
<u>FIRE vs PLUM</u>	ok	hard	1.00in	0	0	0	0	0
<u>FIRE vs STRCT</u>	ok	hard	1.00in	0	0	0	0	0
<u>HVAC vs PLUM</u>	ok	hard	1.00in	0	0	0	0	0
<u>HVAC vs STRCT</u>	ok	hard	1.00in	12	0	0	0	12
<u>PLUM vs STRCT</u>	ok	hard	1.00in	0	0	0	0	0
			Total	15	0	0	0	15

# ARCH vs ELEC

## Clashes

Status	Clash Groups	Ungrouped Clashes
Active	0	0
Approved	0	0
Reviewed	0	0
Resolved	0	1
Total	0	1

## Settings

Units	in
Status	ok
Tolerance	1.00in
Type	hard

## Active Clash Groups

Name	Status	Max Distance	Comments	Clashes				
				Active	Approved	Reviewed	Resolved	Total
				0	0	0	0	0

# ARCH vs FIRE

## Clashes

Status	Clash Groups	Ungrouped Clashes
Active	0	0
Approved	0	0
Reviewed	0	0
Resolved	0	0
Total	0	0

## Settings

Units	in
Status	ok
Tolerance	1.00in
Type	hard

## Active Clash Groups

Name	Status	Max Distance	Comments	Clashes				
				Active	Approved	Reviewed	Resolved	Total
				0	0	0	0	0

# ARCH vs HVAC

## Clashes

Status	Clash Groups	Ungrouped Clashes
Active	0	187
Approved	0	0
Reviewed	0	0
Resolved	0	13
Total	0	200

## Settings

Units	in
Status	ok
Tolerance	1.00in
Type	hard

## Active Clash Groups

Name	Status	Max Distance	Comments	Clashes				
				Active	Approved	Reviewed	Resolved	Total
				0	0	0	0	0

# ARCH vs PLUM

## Clashes

Status	Clash Groups	Ungrouped Clashes
Active	3	498
Approved	0	0
Reviewed	0	0
Resolved	0	20
Total	3	518

## Settings

Units	in
Status	ok
Tolerance	1.00in
Type	hard

## Active Clash Groups

Name	Status	Max Distance	Comments	Clashes				
				Active	Approved	Reviewed	Resolved	Total
New Clash Group	active	-27.23in	0	13	0	0	0	13
blah1	active	-12.00in	0	6	0	0	0	6
New Clash Group (1)	active	-9.42in	0	4	0	0	0	4
				23	0	0	0	23

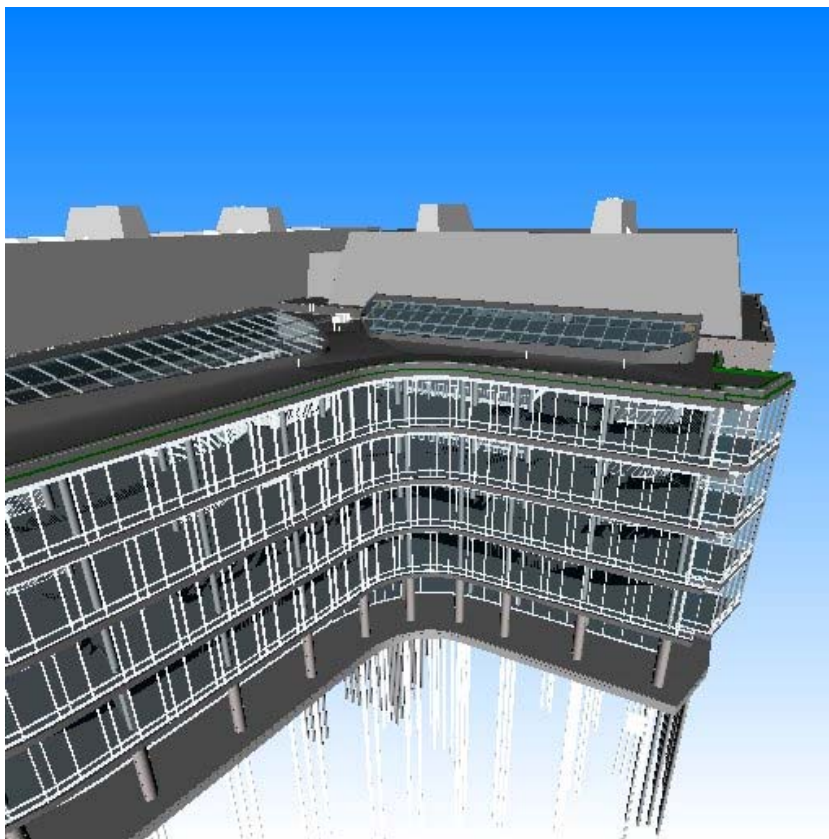
## New Clash Group

### Information

Status	active
Point	1473.75, 2463.25, 2463.25
Max Distance	-27.23in
Type	Hard
Test	ARCH vs PLUM

### Clashes

Status	Count
Active	13
Approved	0
Reviewed	0
Resolved	0
Total	13



### Comments

Date	Comment
------	---------

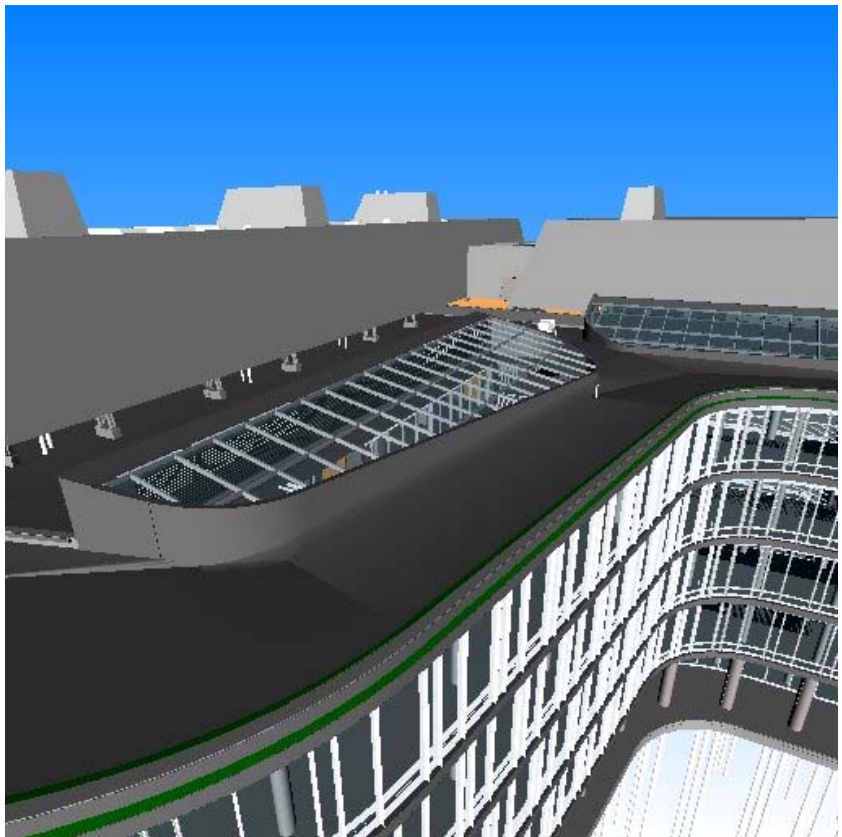
# blah1

## Information

Status	active
Point	439.66, 2786.00, 2786.00
Max Distance	-12.00in
Type	Hard
Test	ARCH vs PLUM

## Clashes

Status	Count
Active	6
Approved	0
Reviewed	0
Resolved	0
Total	6



## Comments

Date	Comment
------	---------

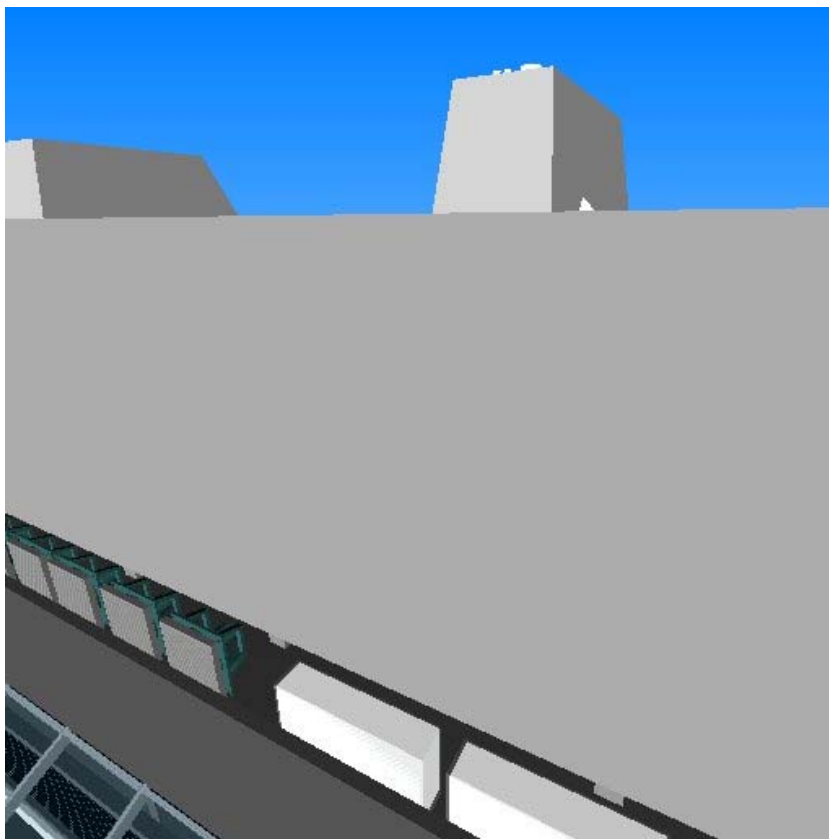
## New Clash Group (1)

### Information

Status	active
Point	2258.63, 2370.31, 2370.31
Max Distance	-9.42in
Type	Hard
Test	ARCH vs PLUM

### Clashes

Status	Count
Active	4
Approved	0
Reviewed	0
Resolved	0
Total	4



### Comments

Date	Comment
------	---------



# ARCH vs STRCT

## Clashes

Status	Clash Groups	Ungrouped Clashes
Active	0	1881
Approved	0	0
Reviewed	0	0
Resolved	0	420
Total	0	2301

## Settings

Units	in
Status	ok
Tolerance	1.00in
Type	hard

## Active Clash Groups

Name	Status	Max Distance	Comments	Clashes				
				Active	Approved	Reviewed	Resolved	Total
				0	0	0	0	0

# ELEC vs FIRE

## Clashes

Status	Clash Groups	Ungrouped Clashes
Active	0	0
Approved	0	0
Reviewed	0	0
Resolved	0	0
Total	0	0

## Settings

Units	in
Status	ok
Tolerance	1.00in
Type	hard

## Active Clash Groups

Name	Status	Max Distance	Comments	Clashes				
				Active	Approved	Reviewed	Resolved	Total
				0	0	0	0	0

# ELEC vs HVAC

## Clashes

Status	Clash Groups	Ungrouped Clashes
Active	0	1
Approved	0	0
Reviewed	0	0
Resolved	0	0
Total	0	1

## Settings

Units	in
Status	ok
Tolerance	1.00in
Type	hard

## Active Clash Groups

Name	Status	Max Distance	Comments	Clashes				
				Active	Approved	Reviewed	Resolved	Total
				0	0	0	0	0

# ELEC vs PLUM

## Clashes

Status	Clash Groups	Ungrouped Clashes
Active	0	7
Approved	0	0
Reviewed	0	0
Resolved	0	0
Total	0	7

## Settings

Units	in
Status	ok
Tolerance	1.00in
Type	hard

## Active Clash Groups

Name	Status	Max Distance	Comments	Clashes				
				Active	Approved	Reviewed	Resolved	Total
				0	0	0	0	0

# ELEC vs STRCT

## Clashes

Status	Clash Groups	Ungrouped Clashes
Active	0	14
Approved	0	8
Reviewed	0	0
Resolved	0	1
Total	0	23

## Settings

Units	in
Status	ok
Tolerance	1.00in
Type	hard

## Active Clash Groups

Name	Status	Max Distance	Comments	Clashes				
				Active	Approved	Reviewed	Resolved	Total
				0	0	0	0	0

# FIRE vs HVAC

## Clashes

Status	Clash Groups	Ungrouped Clashes
Active	0	0
Approved	0	0
Reviewed	0	0
Resolved	0	0
Total	0	0

## Settings

Units	in
Status	ok
Tolerance	1.00in
Type	hard

## Active Clash Groups

Name	Status	Max Distance	Comments	Clashes				
				Active	Approved	Reviewed	Resolved	Total
				0	0	0	0	0

# FIRE vs PLUM

## Clashes

Status	Clash Groups	Ungrouped Clashes
Active	0	0
Approved	0	0
Reviewed	0	0
Resolved	0	0
Total	0	0

## Settings

Units	in
Status	ok
Tolerance	1.00in
Type	hard

## Active Clash Groups

Name	Status	Max Distance	Comments	Clashes				
				Active	Approved	Reviewed	Resolved	Total
				0	0	0	0	0

# FIRE vs STRCT

## Clashes

Status	Clash Groups	Ungrouped Clashes
Active	0	0
Approved	0	0
Reviewed	0	0
Resolved	0	0
Total	0	0

## Settings

Units	in
Status	ok
Tolerance	1.00in
Type	hard

## Active Clash Groups

Name	Status	Max Distance	Comments	Clashes				
				Active	Approved	Reviewed	Resolved	Total
				0	0	0	0	0



# HVAC vs PLUM

## Clashes

Status	Clash Groups	Ungrouped Clashes
Active	0	32
Approved	0	0
Reviewed	0	0
Resolved	0	0
Total	0	32

## Settings

Units	in
Status	ok
Tolerance	1.00in
Type	hard

## Active Clash Groups

Name	Status	Max Distance	Comments	Clashes				
				Active	Approved	Reviewed	Resolved	Total
				0	0	0	0	0

# HVAC vs STRCT

## Clashes

Status	Clash Groups	Ungrouped Clashes
Active	12	65
Approved	0	9
Reviewed	0	1
Resolved	0	0
<b>Total</b>	<b>12</b>	<b>75</b>

## Settings

Units	in
Status	ok
Tolerance	1.00in
Type	hard

## Active Clash Groups

Name	Status	Max Distance	Comments	Clashes				
				Active	Approved	Reviewed	Resolved	Total
<u>Large Duct hitting screen wall steel</u>	active	-32.78in	0	26	0	0	0	26
<u>Duct into beam</u>	active	-23.00in	0	2	0	0	0	2
<u>Beams through duct</u>	active	-22.19in	3	1	0	0	1	2
<u>brace hitting hvac unit</u>	active	-11.28in	0	1	0	0	0	1
<u>brace into hvac unit</u>	active	-8.26in	0	1	0	0	0	1
<u>duct into curb</u>	active	-6.83in	0	1	0	0	0	1
<u>Catwalk extends past shaft into duct</u>	active	-6.64in	0	2	0	0	0	2
<u>HVAC unit into curb</u>	active	-5.10in	0	1	0	0	0	1
<u>MEP unit to catwalk supports</u>	active	-4.42in	0	3	0	0	0	3
<u>Brace into duct</u>	active	-3.63in	0	2	0	0	0	2
<u>Ducts into stack steel</u>	active	-3.29in	0	66	0	0	0	66
<u>blower into brace</u>	active	-2.45in	0	1	0	0	0	1
				107	0	0	1	108

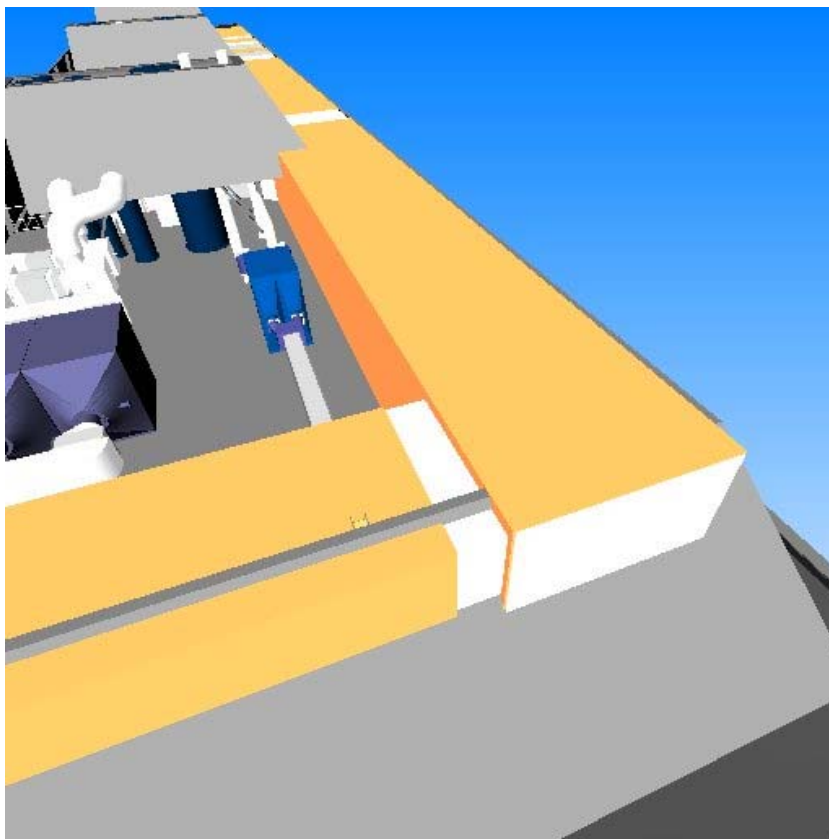
## Large Duct hitting screen wall steel

### Information

Status	active
Point	430.06, 869.81, 869.81
Max Distance	-32.78in
Type	Hard
Test	HVAC vs STRCT

### Clashes

Status	Count
Active	26
Approved	0
Reviewed	0
Resolved	0
Total	26



### Comments

Date	Comment
------	---------

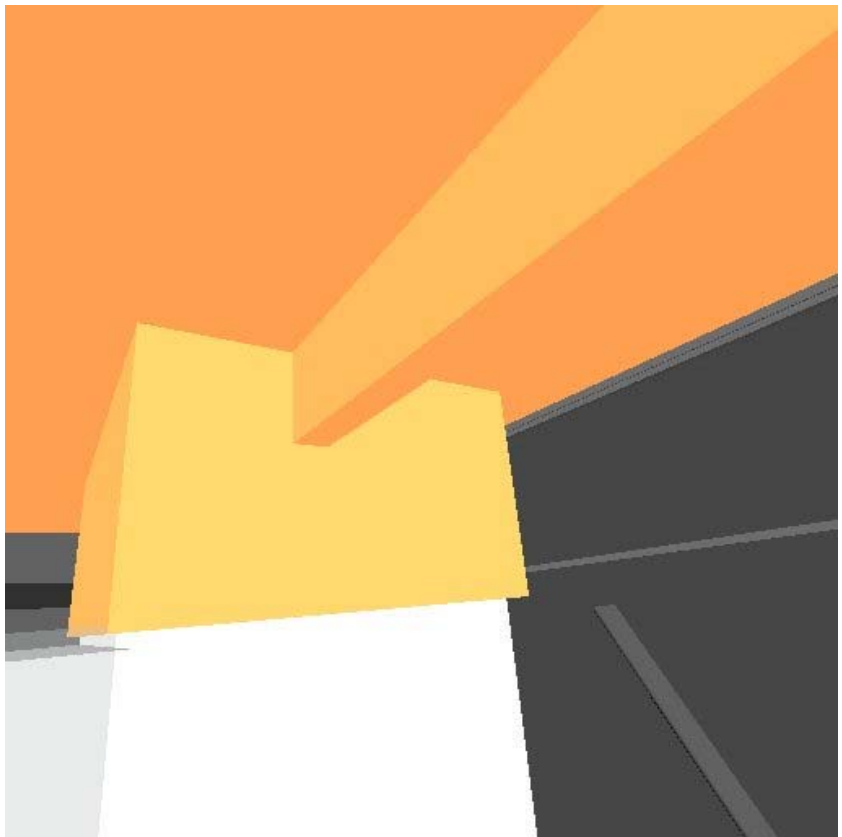
## Duct into beam

### Information

Status	active
Point	1508.76, 2840.00, 2840.00
Max Distance	-23.00in
Type	Hard
Test	HVAC vs STRCT

### Clashes

Status	Count
Active	2
Approved	0
Reviewed	0
Resolved	0
Total	2



### Comments

Date	Comment
------	---------

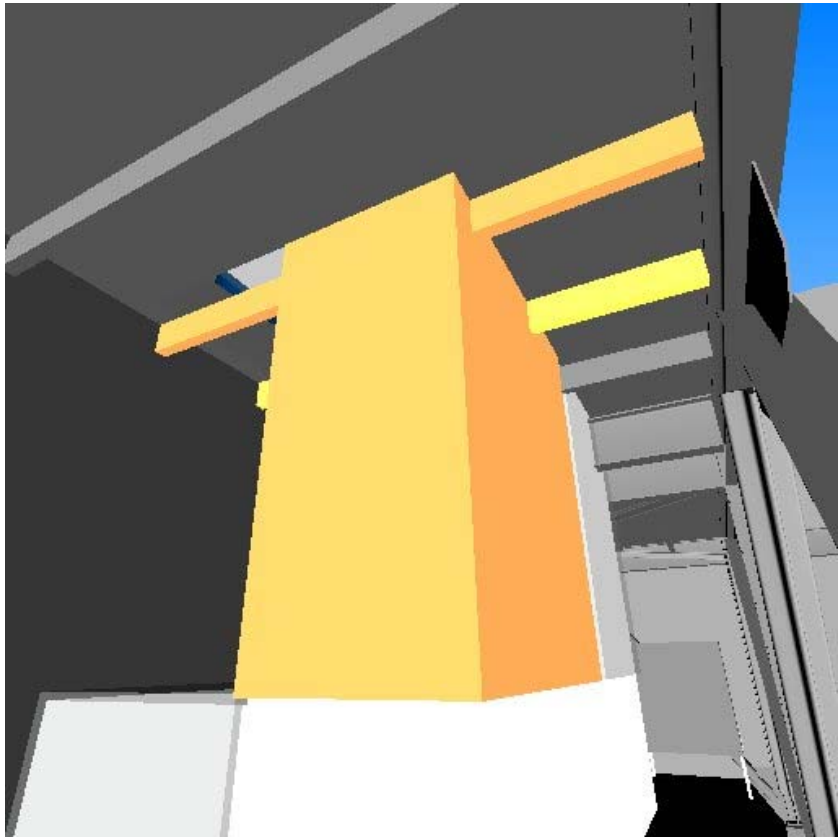
## Beams through duct

### Information

Status	active
Point	1678.68, 2637.15, 2637.15
Max Distance	-22.19in
Type	Hard
Test	HVAC vs STRCT

### Clashes

Status	Count
Active	1
Approved	0
Reviewed	0
Resolved	1
Total	2



### Comments

Date	Comment
2009-10-20	This needs to get fixed
2009-10-20	Yeah this really needs to get fixed
2009-10-20	This is just another pointless comment

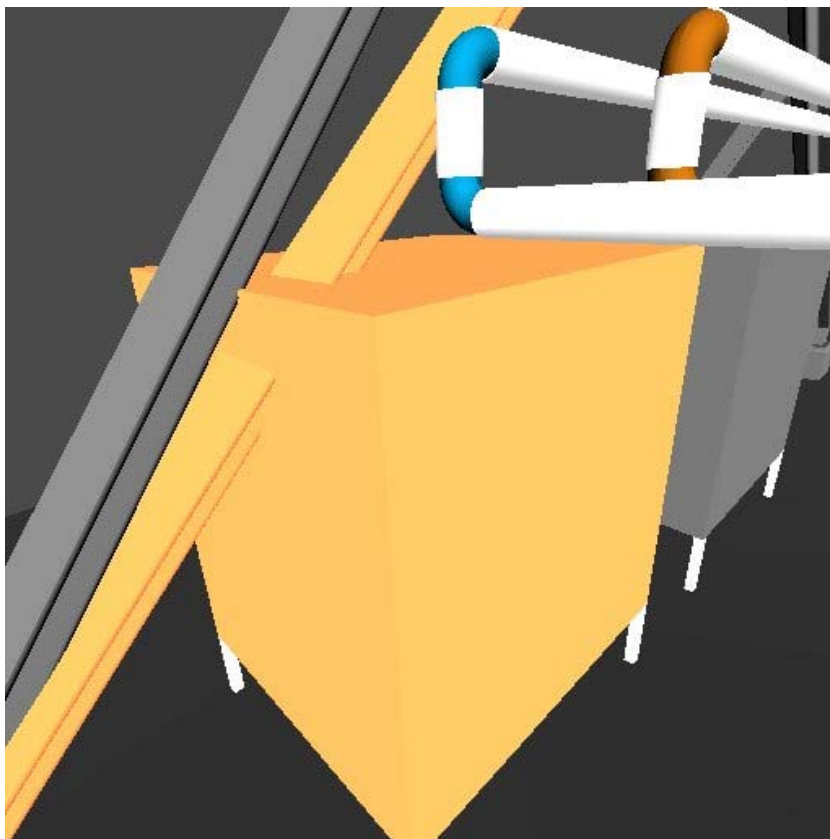
## brace hitting hvac unit

### Information

Status	active
Point	206.92, 2196.47, 2196.47
Max Distance	-11.28in
Type	Hard
Test	HVAC vs STRCT

### Clashes

Status	Count
Active	1
Approved	0
Reviewed	0
Resolved	0
Total	1



### Comments

Date	Comment
------	---------

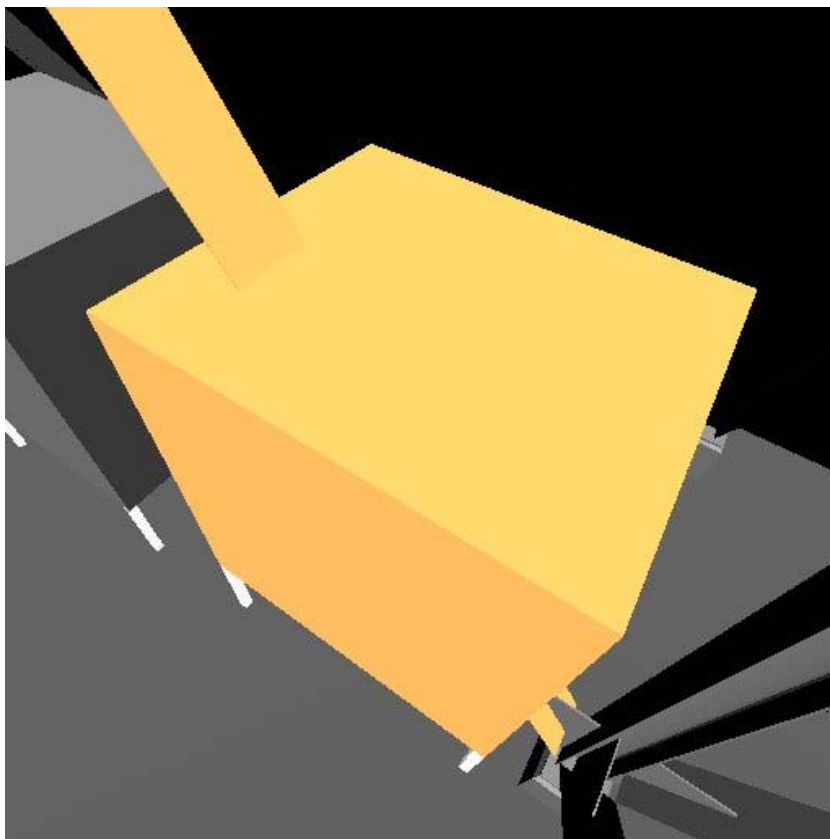
## brace into hvac unit

### Information

Status	active
Point	1652.26, 2988.96, 2988.96
Max Distance	-8.26in
Type	Hard
Test	HVAC vs STRCT

### Clashes

Status	Count
Active	1
Approved	0
Reviewed	0
Resolved	0
Total	1



### Comments

Date	Comment
------	---------

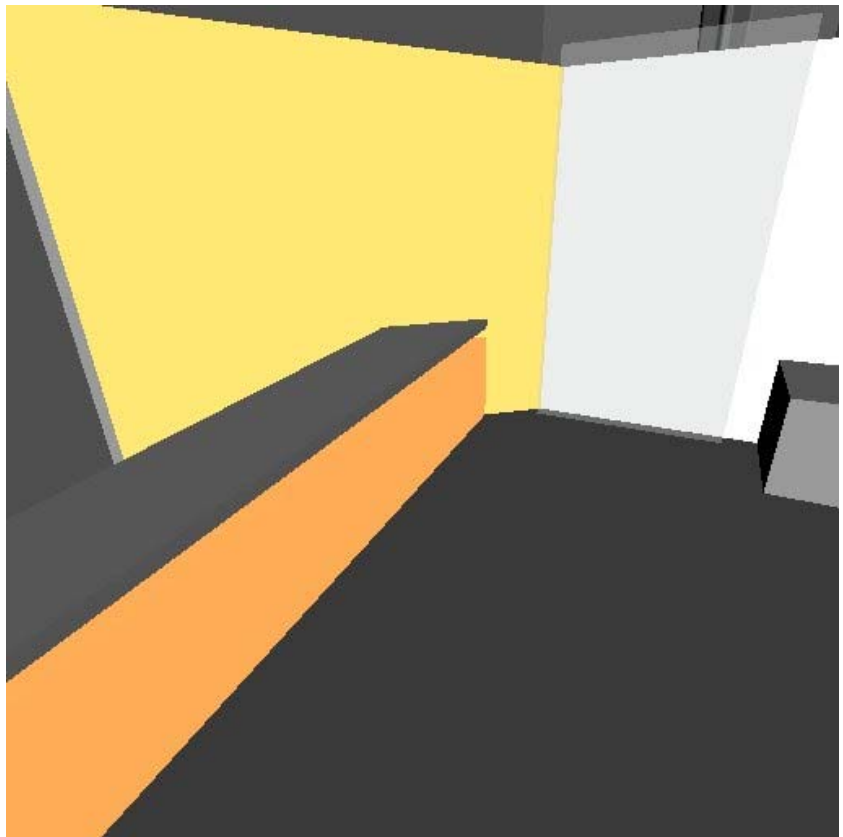
## duct into curb

### Information

Status	active
Point	383.32, 2121.00, 2121.00
Max Distance	-6.83in
Type	Hard
Test	HVAC vs STRCT

### Clashes

Status	Count
Active	1
Approved	0
Reviewed	0
Resolved	0
Total	1



### Comments

Date	Comment
------	---------



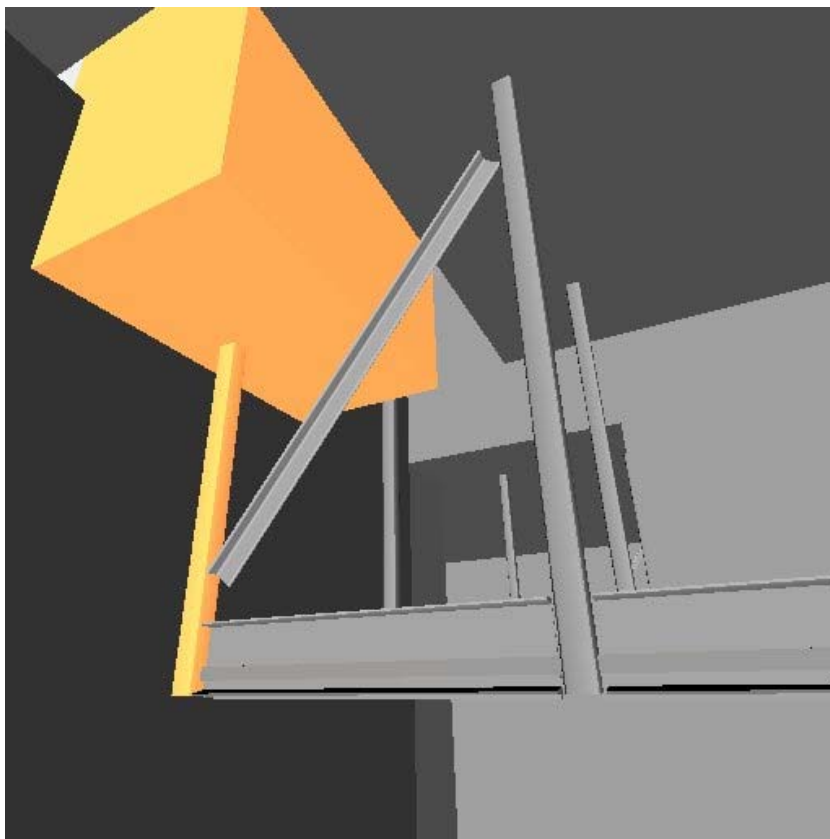
## Catwalk extends past shaft into duct

### Information

Status	active
Point	1558.61, 2763.04, 2763.04
Max Distance	-6.64in
Type	Hard
Test	HVAC vs STRCT

### Clashes

Status	Count
Active	2
Approved	0
Reviewed	0
Resolved	0
Total	2



### Comments

Date	Comment
------	---------

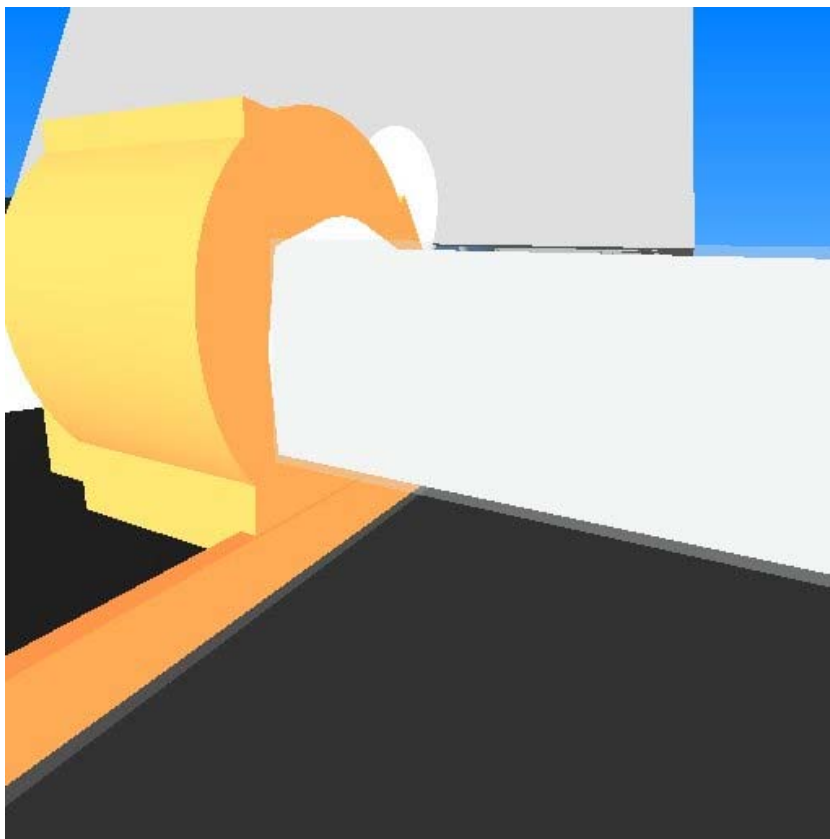
## HVAC unit into curb

### Information

Status	active
Point	1386.61, 2510.63, 2510.63
Max Distance	-5.10in
Type	Hard
Test	HVAC vs STRCT

### Clashes

Status	Count
Active	1
Approved	0
Reviewed	0
Resolved	0
Total	1



### Comments

Date	Comment
------	---------

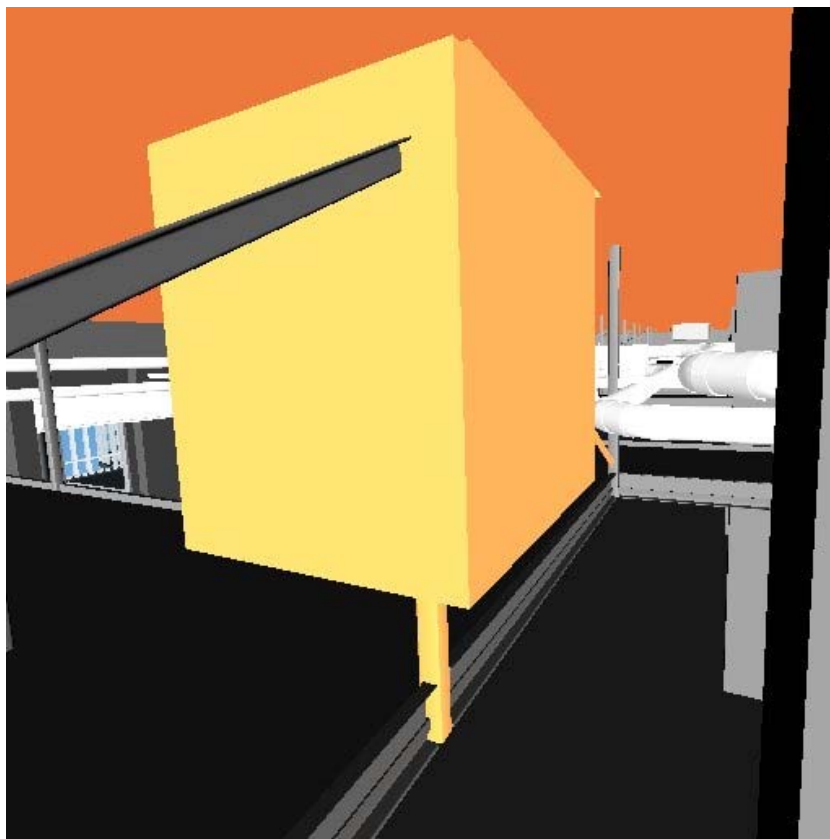
## MEP unit to catwalk supports

### Information

Status	active
Point	2656.48, 2472.41, 2472.41
Max Distance	-4.42in
Type	Hard
Test	HVAC vs STRCT

### Clashes

Status	Count
Active	3
Approved	0
Reviewed	0
Resolved	0
Total	3



### Comments

Date	Comment
------	---------

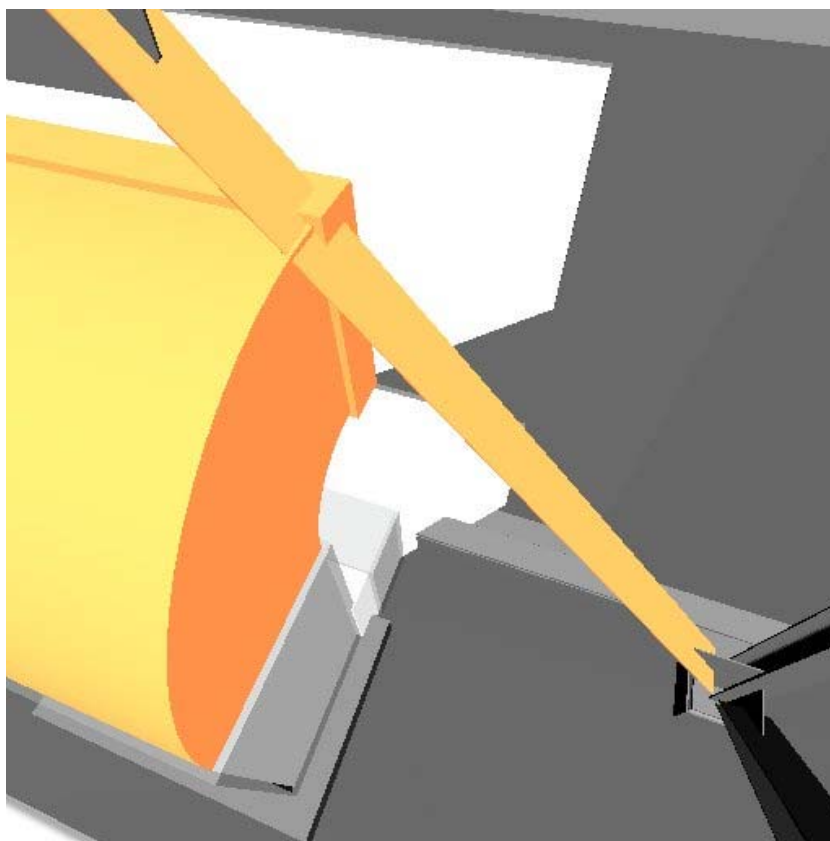
## Brace into duct

### Information

Status	active
Point	311.78, 2136.83, 2136.83
Max Distance	-3.63in
Type	Hard
Test	HVAC vs STRCT

### Clashes

Status	Count
Active	2
Approved	0
Reviewed	0
Resolved	0
Total	2



### Comments

Date	Comment
------	---------

## Ducts into stack steel

### Information

Status	active
Point	715.97, 799.85, 799.85
Max Distance	-3.29in
Type	Hard
Test	HVAC vs STRCT

### Clashes

Status	Count
Active	66
Approved	0
Reviewed	0
Resolved	0
Total	66



### Comments

Date	Comment
------	---------

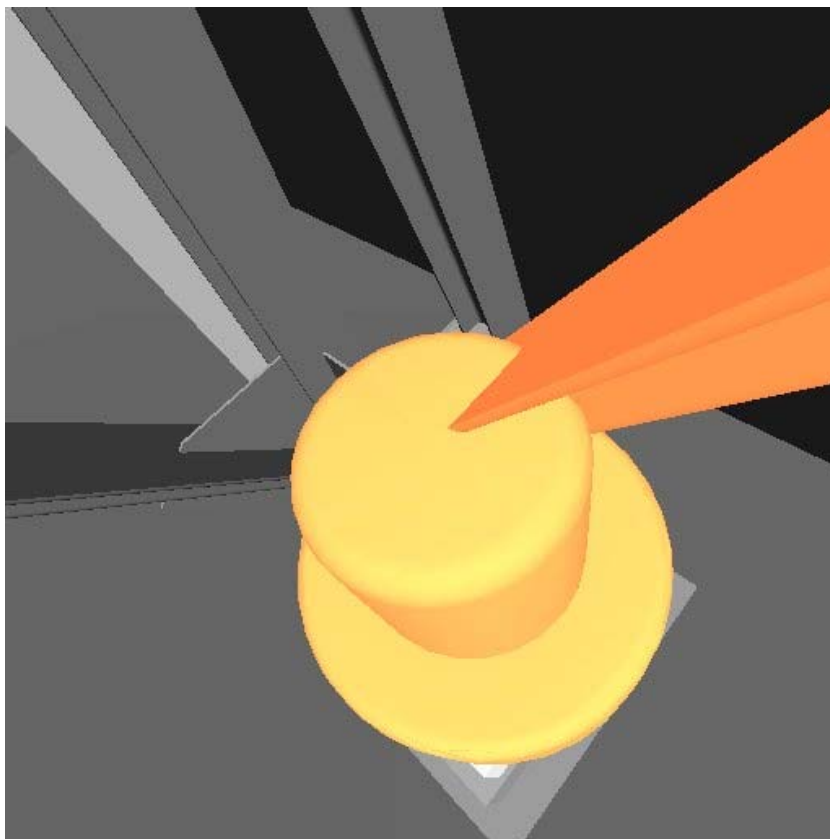
## blower into brace

### Information

Status	active
Point	1446.28, 2227.45, 2227.45
Max Distance	-2.45in
Type	Hard
Test	HVAC vs STRCT

### Clashes

Status	Count
Active	1
Approved	0
Reviewed	0
Resolved	0
Total	1



### Comments

Date	Comment
------	---------

# PLUM vs STRCT

## Clashes

Status	Clash Groups	Ungrouped Clashes
Active	0	518
Approved	0	0
Reviewed	0	0
Resolved	0	222
Total	0	740

## Settings

Units	in
Status	ok
Tolerance	1.00in
Type	hard

## Active Clash Groups

Name	Status	Max Distance	Comments	Clashes				
				Active	Approved	Reviewed	Resolved	Total
				0	0	0	0	0